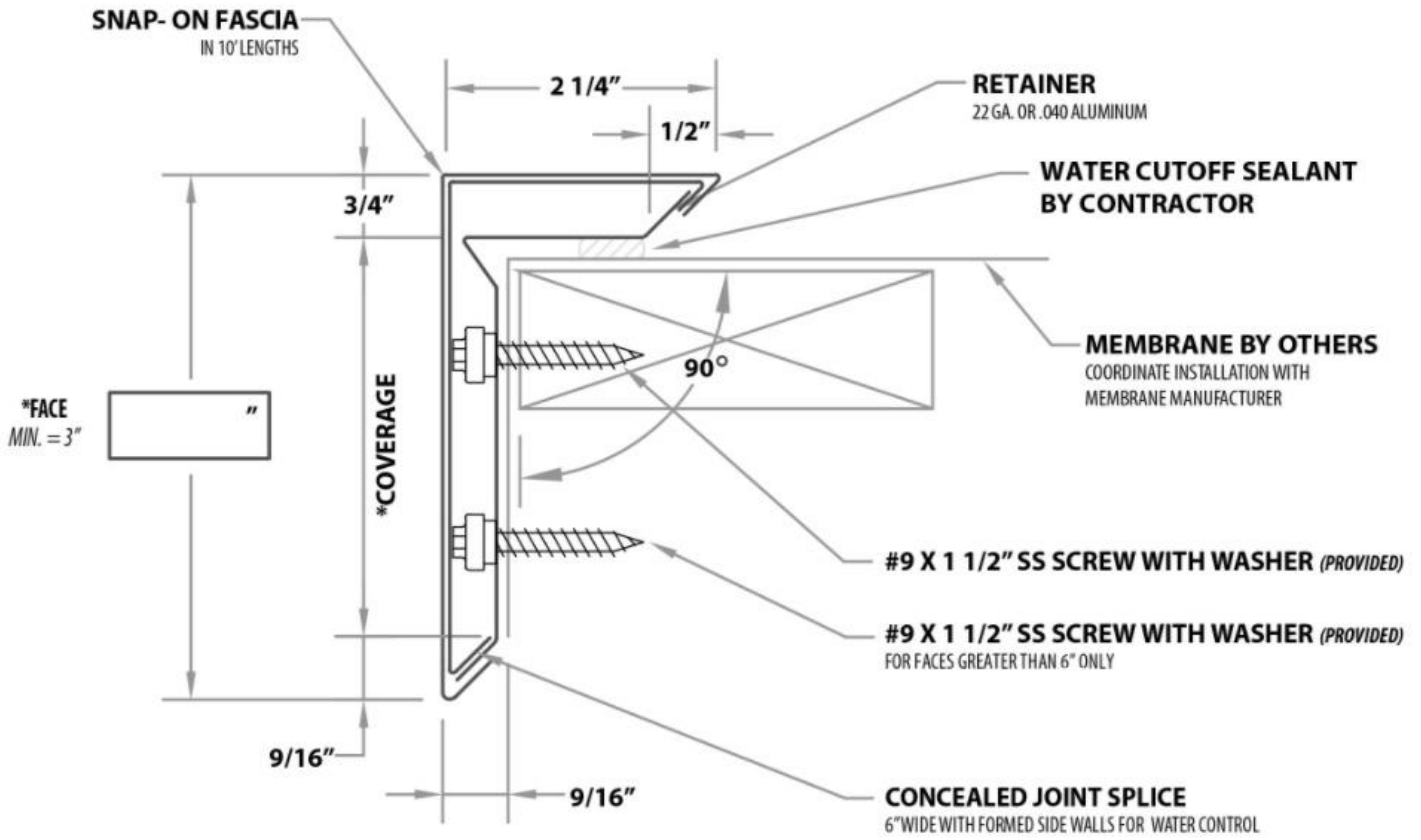


SNAP ON FASCIA



QUANTITIES:
 ____ TOTAL LINEAR FOOTAGE

MATERIAL:
 ____ .032 ALUMINUM
 ____ .040 ALUMINUM
 ____ .050 ALUMINUM
 ____ 22GA GALVALUME
 ____ 24 GA GALVALUME
 ____ OTHER _____

COLOR: _____

- NOTES:**
- Contact Expert Metal Fabricators for verification of test report on your project.
 - Fascia Extender available upon request.
 - Coverage as noted above should extend 1" below water resistant surface.
 - Face dimension should equal coverage plus 1 5/16".

PRINT APPROVED BY:

X

 SIGNATURE DATE

A SIGNED PRINT APPROVAL SIGNIFIES A CUSTOMER HAS VERIFIED ALL DIMENSIONS, SIZES, QUANTITIES, AND MATERIAL TYPES. FABRICATION WILL PROCEED ONLY AFTER RECEIPT OF SIGNED PRINT APPROVAL.

PROJECT INFORMATION

 (PROJECT NAME)

 (ARCHITECT)

 (CUSTOMER)

 (REPRESENTATIVE/DISTRIBUTOR)

 EXPERT METAL FABRICATORS

Paul Matlock
 (636) 575-3892
 (636) 234-5344
 2290 Country Club Estates Dr.
 Pacific, MO 63069